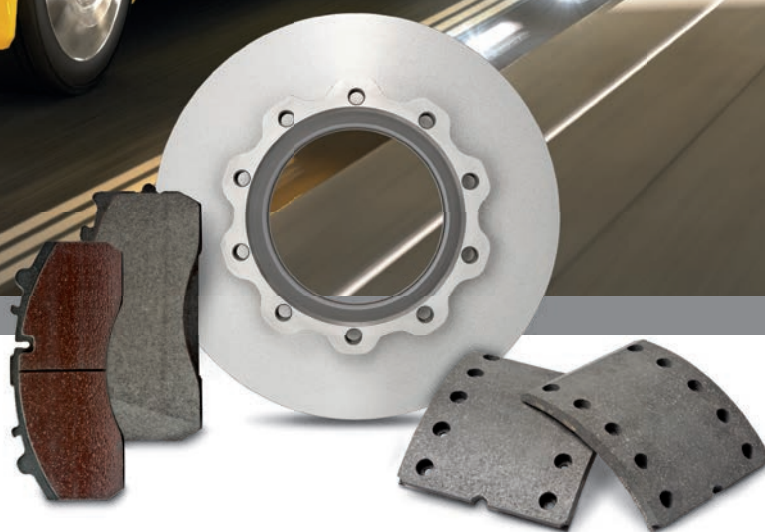




TEXTAR®

BRAKE TECHNOLOGY



Current O.E. homologations
for commercial vehicles

Текущие О.Е. подтверждения для
коммерческого транспорта

www.textar.com



Textar is TMD Friction's leading brand for commercial vehicle friction solutions. Be it for truck, trailer, bus or coach – Textar offers an optimum material for every application and is fitted by leading brake and vehicle manufacturers worldwide.

70% of Europe's commercial vehicles fitted with linings are originally equipped with Textar. In the rapidly growing segment of disc brakes for commercial vehicles Textar is the leading O.E. supplier and at the forefront of disc brake technology.



Являясь брендом TMD Friction, Textar – лидер в производстве тормозных колодок для коммерческого транспорта. Будь то грузовик, прицеп, городской или рейсовый автобус – Textar предлагает оптимальное решение для каждого из них. Ведущие мировые производители автомобилей и тормозных систем используют тормозные колодки Textar.

На 70% коммерческого транспорта в Европе изначально установлены тормозные накладки Textar. В быстро растущем сегменте дисковых тормозных систем для коммерческого транспорта, Textar является ведущим О.Е. поставщиком, и всегда на передовой линии в разработке новейших технологий и решений в данной области применения.





additional axle	Дополнительная ось
all-wheel drive + dump truck	Полный привод + Самосвал
article no.	№ Артикула
brake	Тормоза
brake disc	Тормозной диск
bus	Автобус
corporation bus with MAN chassis	Автобус с шасси MAN
front axle	Передняя ось
intercity bus with MAN chassis	Рейсовый автобус с шасси MAN
key lining	Накладка с «ключом»
lifting axle	Подъемная ось
model	Модель
new	Новый
oversize of	Большого размера
rear axle	Задняя ось
series / line	Серия
single tyres	Одиночные шины
South America	Южная Америка
transporter / bus (T4)	Фургон / Автобус (T4)
truck	Грузовик
year (year built)	Год выпуска





Vehicle Manufacturer / Производитель автомобилей

Model	Year	Front Axle	Art-Nr.	Rear Axle	Art-Nr.
Ernst Auwärter (Bus)					
Mini-Mic Bus	1993-	29055 220 0 4 T3010	2905503	29055 220 0 4 T3010	2905503
BMC (Truck/LKW)					
Wabco PAN 17		29285 260 3 4 T3016	2928503	29285 260 3 4 T3016	2928503
CNHTC China National Heavy Duty Truck Corporation (China)					
HOWO H7 CNHTC Z3 20"		29254 300 1 4 T8000	2925401		
CNHTC Z4 22.5"		29280 300 1 4 T8000		29280 300 1 4 T8000	
16"		29289 270 0 4 T8000			
Csepel/Ungarn					
Midi Bus	1993-	29055 220 0 4 T3010	2905503	29055 220 0 4 T3010	2905503
DAF (Truck/LKW)					
LF 45	2001-07/2014	29088 260 3 4 T3010	2908807	29088 260 3 4 T3010	2908807
LF 45	08/2014-	29285 260 3 4 T3010	2928502	29285 260 3 4 T3010	2928502
LF 55, 12-15 t	2001-2002	29141 298 1 4 T3010	2914106	29141 298 1 4 T3010	2914106
LF 55, 12-15 t	2003-08/2014	29159 298 2 4 T3010	2915901	29159 298 2 4 T3010	2915901
LF 55, 12-15 t	09/2014-	29313 298 2 4 T3010	2931301	29313 298 2 4 T3010	2931301
LF 55, 18 t	2001-10/2011	29202 300 1 4 T7400	2920201	29202 300 1 4 T7400	2920201
LF 55, 18 t	11/2011-	29278 300 1 4 T7400	2927802	29278 300 1 4 T7400	2927802
CF 65	2001-10/2011	29202 300 1 4 T7400	2920201	29202 300 1 4 T7400	2920201
CF 65	11/2011-	29278 300 1 4 T7400	2927802	29278 300 1 4 T7400	2927802
CF 75	2001-10/2011	29202 300 1 4 T7400	2920201	29202 300 1 4 T7400	2920201
CF 75	11/2011-	29278 300 1 4 T7400	2927802	29278 300 1 4 T7400	2927802
CF 85	2001-10/2011	29202 300 1 4 T7400	2920201	29202 300 1 4 T7400	2920201
CF 85	11/2011-	29278 300 1 4 T7400	2927802	29278 300 1 4 T7400	2927802
XF 95	2002-10/2011	29202 300 1 4 T7400	2920201	29202 300 1 4 T7400	2920201
XF 95	11/2011-	29278 300 1 4 T7400	2927802	29278 300 1 4 T7400	2927802
XF 105	2006-10/2011	29202 300 1 4 T7400	2920201	29202 300 1 4 T7400	2920201
XF 105	11/2011-	29278 300 1 4 T7400	2927802	29278 300 1 4 T7400	2927802
419x152,4				19024 2150 0 5 D7203/G203	1902401
419x203				19617 1850 0 5 D7203/G203	1961705
420x150				19010 2080 0 5 D7203/G203	1901001
420x150				19900 1910 0 5 D7203/G203	1990009
420x175				19052 2070 0 5 D7203/G203	1905201
420x200				19063 2070 0 5 D7203/G203	1906301
420x200				19890 1850 0 5 D7203/G203	1989007
420x240				19069 2080 0 5 D7203/G203	1906901

Model	Year	Front Axle	Art-Nr.	Rear Axle	Art-Nr.
Dongfeng/Yutong Bus (China)					
410x180		17406 1700 0 8 T8600			
410x180				15704 1700 0 8 T8600	
410x220		19138 1680 0 8 T8600			
410x220				19139 1680 0 8 T8600	
400x155		17067 1700 0 8 T8600			
400x155				19086 1700 0 8 T8600	
Dennis (Bus)					
Enviro-Line	2001-08/2014	29159 298 2 4 T7400	2915907	29159 298 2 4 T7400	2915907
Enviro-Line	09/2014-	29313 298 2 4 T7400	2931303	29313 298 2 4 T7400	2931303
Enviro-Line		29285 260 3 4 T7400	2928504	29285 260 3 4 T7400	2928504
HUAJIN (Truck/LKW) (China)					
420x200		19094 1800 0 8 T090/T013	1909442	19094 1800 0 8 T090/T013	1909442
420x180		19032 1800 0 8 T090/T013	1903234	19032 1800 0 8 T090/T013	1903234
420x180		19636 1850 0 5 T090/T013	1963601	19636 1850 0 5 T090/T013	1963601
420x218		19126 1850 0 5 T013		19126 1850 0 5 T013	
HUALING (Truck/LKW) (China)					
410x185				19246 1500 0 8 T8860	
Ford (Truck/LKW)					
Cargo	08/2012-	29174 292 2 4 T3032	2917401	29174 292 2 4 T3032	2917401
Cargo		19116 2100 0 5 D7151	1911602	19116 2100 0 5 D7151	1911602
Cargo		19071 1800 0 8 G115/D7115	1907109	19071 1800 0 8 G115/D7115	1907109
FOTON (Truck/LKW) (China)					
YOUFIN DA06 20"		29288 300 0 4 T8050			
GAZ Group (Truck/LKW)					
Wabco PAN17		29285 260 3 4 T3032	2928501	29285 260 3 4 T3032	2928501
Knorr SB5		29183 340 2 5 T3030	2918303	29183 340 2 5 T3030	2918303
Irisbus (Bus)					
Meritor D-Elsa-2		29131 302 1 4 T3016	2913105	29131 302 1 4 T3016	2913105
414x220		19187 1850 0 8 T0115	1918709	19187 1850 0 8 T0115	1918709
Isuzu (Truck/LKW)					
Truck with Meritor Elsa 225-3		29174 292 2 4 T3032	2917401	29174 292 2 4 T3032	2917401
Iveco					
Daily Turbo 5,9 t	1992-	29001 200 0 5 T456	2900102	17096 1260 0 5 T017	1709601
Daily		29107 200 0 5 T456	2910701		
Z-Serie	1986-1991	29017 230 0 4 T456	2901703		
Eurocargo (Tector)	2000-07/2014	29088 260 3 4 T3016	2908823	29088 260 3 4 T3016	2908823



Model	Year	Front Axle	Art-Nr.	Rear Axle	Art-Nr.
Eurocargo (Tector)	08/2014-	29285 260 3 4 T3016	2928503	29285 260 3 4 T3016	2828503
Eurocargo (Tector)		29095 300 3 4 T3030	2909522	29095 300 3 4 T3030	2909522
Eurocargo (Tector)		29320 300 1 4 T3030	2932005	29320 300 1 4 T3030	2932005
Eurostar		19714 2100 0 5 D7141	1971410	19714 2100 0 5 D7141	1971410
Eurostar		19091 2180 0 5 D7141	1909102	19091 2180 0 5 D7141	1909102
Eurostar		19716 2100 0 5 D7141	1971612	19716 2100 0 5 D7141	1971612
Eurostar		19553 2100 0 5 D7141	1955301	19553 2100 0 5 D7141	1955301
300x100	1986-1991			17096 1260 0 5 T017	1709601
410x180 (Eurotrakker)				19109 2100 0 5 D 7151	1910902
410x200 (Eurotrakker)				19116 2100 0 5 D 7151	1911602
325x120				17088 1260 0 5 T011	1708808
325x140				17688 1200 0 4 T011	1768801
325x100				17924 1200 0 4 D7141/T011	1792408
381x177,8				19384 1800 0 5 D7141/T022	1938414
410x200				19786 1780 0 8 D7141/T011	1978610
410x220				19824 1860 0 5 D7141/T011	1982410
315/316 (R81)	1981-1987	29688 250 0 8 T456	2968801		
315	1988-	29688 250 0 8 T456	2968801		
471/480	1984-	29016 280 0 5 T456	2901601		
Kamaz (Truck/LKW)					
4307/ 4308	2005-12/2013	29148 340 2 5 T3030	2914815	29148 340 2 5 T3030	2914815
4307/ 4308	01/2014-	29183 340 2 5 T3030	2918303	29183 340 2 5 T3030	2918303
Kässbohrer (Evobus) Bus					
Knorr Bremse K85	1989-	29747 320 0 8 T456	2974703		
S 315, 319 NF	1991-	29030 282 1 4 T7400	2903009	29278 300 1 4 T7400	2927802
410x160		19849 1755 0 5 T016	1984902		
410x220				19699 1755 0 5 T016	1969901
MAN (Truck/LKW)					
F-Serie		17238 1700 0 8 T020	1723806		
F-Serie		19713 1700 0 8 T020	1971301		
F-Serie		19495 1700 0 8 T020	1949511	19495 1700 0 8 T020	1949511
F-Serie				19496 1700 0 8 T020	1949611
G-Serie	-1987	15817 1200 0 5 T026	1581702	15817 1200 0 5 T026	1581702
L2000	1993-1996	29055 220 0 4 T3010	2905503		
L2000	1996-07/2014	29088 260 3 4 T3010	2908807		
L2000	08/2014-	29285 260 3 4 T3010	2928502		
L2000		29091 270 3 4 T3010 (Oversize from/ Übermaß von 29088)	2909104		

Model	Year	Front Axle	Art-Nr.	Rear Axle	Art-Nr.
TGL	2005-06/2014	29148 340 2 5 T3029	2914811	29148 340 2 5 T3029	2914811
TGL	07/2014-	29183 340 2 5 T3029	2918301	29183 340 2 5 T3029	2918301
M-Serie		17682 1700 0 8 T020	1768202		
M-Serie		17238 1700 0 8 T020	1723806		
M-Serie		19713 1700 0 8 T020	1971301		
M-Serie		19495 1700 0 8 T020	1949511	19495 1700 0 8 T020	1949511
M-Serie			1949611	19496 1700 0 8 T020	1949611
M 2000 (12 t)	1996-07/2014	29088 260 3 4 T3010	2908807	29088 260 3 4 T3010	2908807
M 2000 (12 t)	08/2014-	29285 260 3 4 T3010	2928502	29285 260 3 4 T3010	2928502
M 2000 (12 t)		29091 270 3 4 T3010 (Oversize from/ Übermaß von 29088)	2909104	29091 270 3 4 T3010 (Oversize from/ Übermaß von 29088)	2909104
M 2000 (14 t)		29095 300 3 4 T3010	2909507		
M 2000 (14 t)		29320 300 1 4 T3010	2932001		
F2000	1994-	29113 282 1 4 T3010	2911303		
F2000		29114 302 1 4 T3010 (Oversize from/ Übermaß von 29113)	2911401		
F2000	1994-	19495 1700 0 8 T020	1949511	19495 1700 0 8 T020	1949511
F2000, (additional axle/Zusatzachse)	1994-			17238 1700 0 8 T020	1723806
F2000	1994-			19496 1700 0 8 T020	1949611
TGA	2000-2001	29113 282 1 4 T3010	2911303	29113 282 1 4 T3010	2911303
TGA		29114 302 1 4 T3010 (Oversize from / Übermaß von 29113)	2911401	29114 302 1 4 T3010 (Oversize from/ Übermaß von 29113)	2911401
TGA/TGX	2001-	29131 302 1 4 T3010	2913103	29131 302 1 4 T3010	2913103
410x143				17238 1700 0 8 T020	1723806
410x222				19581 1790 0 5 T020	1958101
410x163				19713 1700 0 8 T020	1971301
410x163				19579 1790 0 5 T020	1957901
MAN (Bus)					
SR 240/280	1975-	19713 1700 0 8 T020	1971301	19496 1700 0 8 T020	1949611
SÜ 240/280	1972-	19713 1700 0 8 T020	1971301	19496 1700 0 8 T020	1949611
SG 240/242	1986-1994	19579 1790 0 5 T020	1957901	19581 1790 0 5 T020	1958101
SL 200/202	1986-1994	19579 1790 0 5 T020	1957901	19581 1790 0 5 T020	1958101
Corporation bus/Stadtbuss	1986-1995	29113 282 1 4 T3023	2911307	29113 282 1 4 T3023	2911307
Corporation bus/Stadtbuss		29114 302 1 4 T3023 (Oversize from/ Übermaß von 29113)	2911402	29114 302 1 4 T3023 (Oversize from/ Übermaß von 29113)	2911402
FRH 422 Lion`s Star	1994-	29113 282 1 4 T3010	2911303		
FRH 422 Lion`s Star		29114 302 1 4 T3010 (Oversize from/ Übermaß von 29113)	2911401		
MCI Motor Coach Industries (Bus) (USA)					
Meritor EX 225-3		29187 310 1 4 T7400	2918701	29187 310 1 4 T7400	2918701
Menarini (Bus)					
U 210/I 210/I 330	1980-	29016 280 0 5 T456	2901602		
Mercedes-Benz (Truck/LKW)					
TN	1977-1995			11019 0780 0 5 T017	1101901
TN	1977-1995			13020 0780 0 5 T017	1302001



Model	Year	Front Axle	Art-Nr.	Rear Axle	Art-Nr.
Sprinter 408, 411, 412, 413, 414, 416	04/03-	29153 200 1 4 T3011	2915302	29153 200 1 4 T3011	2915302
Sprinter (NCV 3) > 3,5 t	2006-	29192 209 1 4 T3036	2919201		
Sprinter (NCV 3) 5,0 t	2008-	29200 209 2 4 T3036	2920002	29217 206 1 5 T3038	2921702
Vito/Viano	04/2009-	29192 209 1 4 T3036	2919201		
LN 1	1986-			15030 0800 0 5 T017	1503002
LN 1	1986-			15059 0950 0 5 T017	1505901
Atego 7-12 t	1998-	29183 340 2 5 T3016	2918302	29183 340 2 5 T3016	2918302
Atego 12-16 t		29095 300 3 4 T3016	2909504	29095 300 3 4 T3016	2909504
Atego 12-16 t		29361 300 3 4 T3016	2936101	29361 300 3 4 T3016	2936101
Atego	1998-	19494 1700 0 8 T012	1949407		
MK (BM 652-655)	1989-	17682 1700 0 8 T012	1768202	17682 1700 0 8 T012	1768202
MK (BM 652-655)	1989-	17238 1700 0 8 T012	1723802	17238 1700 0 8 T012	1723802
MK (BM 652-655)	1989-	19494 1700 0 8 T012	1949407	19494 1700 0 8 T012	1949407
MK (BM 652-655)	1989-	19495 1700 0 8 T012	1949507	19495 1700 0 8 T012	1949507
MK (BM 652-655)	1989-			19496 1700 0 8 T012	1949607
SK Serie (BM 656-)	1989-	19494 1700 0 8 T012	1949407	19494 1700 0 8 T012	1949407
SK Serie (BM 656-)	1989-	19495 1700 0 8 T012	1949507	19495 1700 0 8 T012	1949507
SK Serie (BM 656-)	1989-			19496 1700 0 8 T012	1949607
Actros	1996-	19495 1700 0 8 T012		19496 1700 0 8 T012	1949607
Econic	1998-	29087 300 1 4 T7400	2908711	29087 300 1 4 T7400	2908711
Econic		29278 300 1 4 T7400	2927802	29278 300 1 4 T7400	2927802
South America/Süd Amerika (Wabco PAN 17)		29117 260 0 4 T3010	2911701	29117 260 0 4 T3010	2911701
410x220		19699 1755 0 5 T016	1969901	19699 1755 0 5 T016	1969901
Mercedes-Benz (Bus)					
O 303 9R-12R	1974-1992	17795 1797 0 5 T016	1779501	19706 1797 0 5 T016	1970603
O 303 13R-15R	1974-1992	19706 1797 0 5 T016	1970603	19707 1797 0 5 T016	1970705
O 305	1969-1987	19706 1797 0 5 T016	1970603	19707 1797 0 5 T016	1970705
O 307	1973-1987	19706 1797 0 5 T016	1970603	19707 1797 0 5 T016	1970705
O 405	1984-	19706 1797 0 5 D 7113	1970612	19707 1797 0 5 D 7113	1970714
O 408	1991-	19706 1797 0 5 D 7113	1970612	19707 1797 0 5 D 7113	1970714
Cito, Citaro	1998-	29087 300 1 4 T7400	2908711	29087 300 1 4 T7400	2908711
Cito, Citaro		29278 300 1 4 T7400	2927802	29278 300 1 4 T7400	2927802
Tourino	2003-	29095 300 3 4 T7400	2909518	29095 300 3 4 T7400	2909518
Tourino		29361 300 1 4 T7400	2936102	29361 300 1 4 T7400	2936102
Mercedes-Benz Unimog					
U 400/U 500	2003-	29134 230 1 4 T202	2913401	29134 230 1 4 T202	2913401
U 1000/U 1300	1978-	29581 150 0 4 T205	2958104	29581 150 0 4 T205	2958104
U 1500/U 1700	1978-	29764 203 0 5 T527	2976402	29765 203 0 4 T527	2976502

Model	Year	Front Axle	Art-Nr.	Rear Axle	Art-Nr.
Neoplan (Bus)					
Knorr Bremse	1988-	29747 320 0 8 T456	2974703		
Optare (Bus)					
Solo	2002-07/2014	29088 260 3 4 T7400	2908824	29088 260 3 4 T7400	2908824
Solo	08/2014-	29285 260 3 4 T7400	2928504	29285 260 3 4 T7400	2928504
Meritor EX 225-3		29187 310 1 4 T7400	2918701	29187 310 1 4 T7400	2918701
Perlini (Truck/LKW)					
121-27		29626 258 0 4 T457	2962603	29626 258 0 4 T457	2962603
131-30		29626 258 0 4 T457	2962603	29626 258 0 4 T457	2962603
131-33		29626 258 0 4 T457	2962603	29626 258 0 4 T457	2962603
DP 366 C		29025 340 0 8 T263	2902501	29025 340 0 8 T263	2902501
DP 655 C		29025 340 0 8 T263	2902501	29025 340 0 8 T263	2902501
Prevost (Bus)					
Knorr SB 7000		29087 300 1 4 T7400	2908711	29087 300 1 4 T7400	2908711
Knorr SB 7000		29278 300 1 4 T7400	2927802	29087 300 1 4 T7400	2927802
Renault Truck (Truck/LKW)					
Midliner	1998-2000	29100 252 0 4 T3016	2910004		
Midlum 17,5"	2000-07/2014	29088 260 3 4 T3016	2908823	29088 260 3 4 T3016	2908823
Midlum 17,5"	08/2014-	29285 260 3 4 T3016	2928503	29285 260 3 4 T3016	2928503
Midlum 19,5" Meritor C-Lisa	2000-	29100 252 0 4 T3016	2910004	29100 252 0 4 T3016	2910004
Midlum 19,5" Wabco PAN 19-2	2000-	29142 298 1 4 T3016	2914204	29142 298 1 4 T3016	2914204
New Midlum 7,5 t	2006-07/2014	29088 260 3 4 T3032	2908820	29088 260 3 4 T3032	2908820
New Midlum 7,5 t	08/2014-	29285 260 3 4 T3032	2928501	29285 260 3 4 T3032	2928501
New Midlum 10 t	2006-	29181 300 1 4 T3032	2918101	29181 300 1 4 T3032	2918101
New Midlum 12 -18 t		29173 292 2 4 T3032	2917301	29173 292 2 4 T3032	2917301
New Midlum; Heavy Duty Application/ Schwerlastanwendung		29272 292 2 4 T7600	2927201	29272 292 2 4 T7600	2927201
R-Serie	1993-1996	29030 282 1 4 T3016	2903007		
Magnum/Premium	1996-2000	29090 282 1 4 T3016	2909006		
Magnum/Premium Meritor D 3	2000-	29030 282 1 4 T3016	2903007		
Magnum/Premium Meritor D-Elsa 2	2000-	29131 302 1 4 T3016	2913105		
Magnum E.TECH	2000-	29131 302 1 4 T3016	2913105	29131 302 1 4 T3016	2913105
New Magnum		29174 292 2 4 T3032	2917401	29174 292 2 4 T3032	2917401
New Magnum; Heavy Duty Application/ Schwerlastanwendung		29273 292 2 4 T7600	2927301	29273 292 2 4 T7600	2927301
New Magnum, additional axle/Zusatzachse	-12/2011			29177 292 2 4 T3032	2917701
New Magnum, additional axle/Zusatzachse	01/2012-			29177 292 2 4 T7600	2917705
New Premium		29174 292 2 4 T3032	2917401	29174 292 2 4 T3032	2917401
New Premium; Heavy Duty Application/ Schwerlastanwendung		29273 292 2 4 T7600	2927301	29273 292 2 4 T7600	2927301
New Premium, additional axle/Zusatzachse	-12/2011			29177 292 2 4 T3032	2917701
New Premium, additional axle/Zusatzachse	01/2012-			29177 292 2 4 T7600	2917705
414x150		19934 1850 0 8 T0115	1993409	19934 1850 0 8 T0115	1993409

Model	Year	Front Axle	Art-Nr.	Rear Axle	Art-Nr.
414x220				19187 1850 0 8 T0115	1918709
410x173,8				19090 1800 0 8 D7115/G115	1909007
410x198,6				19071 1800 0 8 D7115/G115	1907109
410x223,6				19068 1800 0 8 D7115/G115	1906810
414x175				19935 1850 0 8 T0115	1993509
Renault (R.V.I.) (Bus)					
Iliade	1999-2000	29030 282 1 4 T3016	2903007	29030 282 1 4 T3016	2903007
Iliade	2000-	29131 302 1 4 T3016	2913105	29131 302 1 4 T3016	2913105
414x220				19187 1850 0 8 D 7113	1918712
Scania (Truck/LKW)					
Series/Serie 4		29201 300 4 4 T3050	2920101	29201 300 4 4 T3050	2920101
Series/Serie P,G,R,T		29201 300 4 4 T3050	2920101	29201 300 4 4 T3050	2920101
Series/Serie 4	-12/2015	29278 300 1 4 T3050	2927801	29278 300 1 4 T3050	2927801
Series/Serie P,G,R,T	-12/2015	29278 300 1 4 T3050	2927801	29278 300 1 4 T3050	2927801
Series/Serie 4	-01/2016-	29331 300 1 4 T3050	2933101	29331 300 1 4 T3050	2933101
Series/Serie P,G,R,T	-01/2016-	29331 300 1 4 T3050	2933101	29331 300 1 4 T3050	2933101
412x127				17991 1900 0 4 D7115/G115	1799102
413x127				17161 1900 0 8 D7115/G115	1716104
413x178				19075 1900 0 8 D7115/G115	1907502
413x178				19931 1900 0 4 D7115/G115	1993104
413x203				19393 1900 0 8 D7115/G115	1939308
413x203				19932 1900 0 4 D7115/G115	1993204
413x254				19647 1900 0 8 D7115/G115	1964702
413x254				19933 1900 0 4 D7115/G115	1993304
Scania (Bus)					
Knorr SB 7000		29059 300 4 4 T7400	2905902	29059 300 4 4 T7400	2905902
Knorr SB 7000	-12/2015	29278 300 1 4 T7400	2927802	29278 300 1 4 T7400	2927802
Knorr SB 7000	-01/2016-	29331 300 1 4 T7400	2933102	29331 300 1 4 T7400	2933102
Solaris (Bus)					
Urbino 10, 12, 15, 18		29087 300 1 4 T7400	2908711	29087 300 1 4 T7400	2908711
Hybrid 18		29087 300 1 4 T7400	2908711	29087 300 1 4 T7400	2908711
Vacanza 12, 13		29087 300 1 4 T7400	2908711	29087 300 1 4 T7400	2908711
Trollino 12, 15, 18		29087 300 1 4 T7400	2908711	29087 300 1 4 T7400	2908711
Urbino 10, 12, 15, 18		29278 300 1 4 T7400	2927802	29278 300 1 4 T7400	2927802
Hybrid 18		29278 300 1 4 T7400	2927802	29278 300 1 4 T7400	2927802
Vacanza 12, 13		29278 300 1 4 T7400	2927802	29278 300 1 4 T7400	2927802
Trollino 12, 15, 18		29278 300 1 4 T7400	2927802	29278 300 1 4 T7400	2927802
Van Hool (Bus)					
coporation bus/ Stadtbus mit MAN-Chassis		29113 282 1 4 T3023	2911307		
intercity bus/ Überlandbus mit MAN-Chassis		29113 282 1 4 T3010	2911303		
Volkswagen					
Transporter/Kombi/Bus (T4)	09/90-	23034 186 0 5 T490			
LT 28, 31, 35 (Einzelbereifung)				13193 0600 1 5 T066	1319302
LT 46	04/96-	29153 200 1 4 T3011	2915302	29153 200 1 4 T3011	2915302
Crafter > 3,5 t	2006-	29192 209 4 4 T3036	2919202		
Crafter 5,0 t	2008-	29200 209 2 4 T3036	2920002	29217 206 1 5 T3038	2921702

Model	Year	Front Axle	Art-Nr.	Rear Axle	Art-Nr.
Volvo (Truck/LKW)					
FL 611, 612	2001-	29136 292 1 4 D 7500	2913606	29136 292 1 4 D 7500	2913606
FL 613, 614, 615	2001-	29137 292 1 4 T3034	2913706	29137 292 1 4 T3034	2913706
FL 618	-12/2012	29125 292 1 4 D 7500	2912503	29125 292 1 4 D 7500	2912503
FL 618	01/2013-	29277 292 1 4 D 7500	2927701	29277 292 1 4 D 7500	2927701
FL II		29173 292 2 4 T3032	2917301	29173 292 2 4 T3032	2917301
FL II; Heavy Duty Application/ Schwerlastanwendung		29272 292 2 4 T7600	2927201	29272 292 2 4 T7600	2927201
FE		29174 292 2 4 T3032	2917401	29174 292 2 4 T3032	2917401
FE II; Heavy Duty Application/ Schwerlastanwendung		29273 292 2 4 T7600	2927301	29273 292 2 4 T7600	2927301
FM-Serie	-12/2012	29125 292 1 4 D 7500	2912503	29125 292 1 4 D 7500	2912503
FM-Serie	01/2013-	29277 292 1 4 D 7500	2927701	29277 292 1 4 D 7500	2927701
FH-Serie	-12/2012	29125 292 1 4 D 7500	2912503	29125 292 1 4 D 7500	2912503
FH-Serie	01/2013-	29277 292 1 4 D 7500	2927701	29277 292 1 4 D 7500	2927701
FH-Serie, lifting Axle/Liftachse	2001-			29151 292 1 4 T3034	2915102
Mack Truck (USA)		29291 292 1 4 T3032/ T7070	2929101	29291 292 1 4 T3032/T7070	2929101
New/Neue FM Series/Serie		29174 292 2 4 T3032	2917401	29174 292 2 4 T3032	2917401
New/Neue FH Series/Serie; Heavy Duty Application/Schwerlastanwendung		29273 292 2 4 T7600	2927301	29273 292 2 4 T7600	2927301
New/Neue FH Series/Serie		29174 292 2 4 T3032	2917401	29174 292 2 4 T3032	2917401
New/Neue FH Series/Serie; Heavy Duty Application/Schwerlastanwendung		29273 292 2 4 T7600	2927301	29273 292 2 4 T7600	2927301
New/Neue FH Series/Serie, additional axle/Zusatzachse	-12/2011			29177 292 2 4 T3032	2917701
New/Neue FH Series/Serie, additional axle/Zusatzachse	01/2012-			29177 292 2 4 T7600	2917705
360x162,5				19640 0970 0 5 T026	1964001
410x125				17992 1840 0 5 G115/D7115	1799202
410x173,8				19090 1800 0 8 G115/D7115	1909007
410x198,6				19071 1800 0 8 G115/T026	1907109
410x223,6				19068 1800 0 8 G115/T026	1906810
410x150				19941 1840 0 8 D7117	
Volvo (Bus)					
360x170		19640 0970 0 5 T026	1964001	19640 0970 0 5 T026	1964001
Meritor D-Duco		29125 292 1 4 D 7500	2912503	29125 292 1 4 D 7500	2912503
Meritor D-Duco	10/2012	29277 292 1 4 D 7500	2927701	29277 292 1 4 D 7500	2927701
Meritor D-ELSA-2		29131 302 1 4 D 7500	2913111	29131 302 1 4 D 7500	2913111
Meritor D-Lisa		29090 282 1 4 T3034	2909009		
YUTONG (Bus) (China)					
YOUFIN DR01 22.5"		29275 300 0 4 T8050		29275 300 0 4 T8050	
Public/City Bus		29278 300 1 4 T7400	2927802	29278 300 1 4 T7400	2927802
Public/City Bus		29059 300 1 4 T7400	2905902	29059 300 1 4 T7400	2905902
Public/City Bus		29331 300 1 4 T7400	2933102	29331 300 1 4 T7400	2933102
410x220		19138 1680 0 8 T8600			
410x220				19139 1680 0 8 T8600	



Axle Manufacturer / Производитель осей

AXLE	Rear Axle	Art-Nr.
Baoben		
410x163	19494 1700 0 8 T012	1949407
410x183	19495 1700 0 8 T012	1949506
Baohua Axle/KIC (China)		
420x178	19036 1850 0 5 T013	
420x218	19126 1850 0 5 T013	
420x218	19369 1850 0 5 T013	
BPW		
300x60	15004 0500 0 4 T053	1500401
300x100	17347 1800 0 5 T090	1734703
300x150	19573 1800 0 8 T090	1957306
300x200	19574 1800 0 8 T090	1957428
350x60	15044 0600 0 4 T053	1504401
360x160	19952 1800 0 5 T090	1995201
360x200	19902 1800 0 5 T090	1990210
400x80	15247 0800 0 4 T053	1524701
400x120	17115 1000 0 8 T053	1711501
410x120	17405 1200 0 8 T090	1740501
410x180	19081 1200 0 8 T090	1908101
420x120	17377 1800 0 8 T090	1737707
420x160	19200 1800 0 8 T090	1920005
420x180	19032 1800 0 8 T090	1903234
420x180 Key Lining/Schlüsselbelag	19191 1800 0 8 T090	1919101
420x200	19094 1800 0 8 T090	1909442
420x200 Key Lining/Schlüsselbelag	19192 1800 0 8 T090	1919201
420x220	19591 1800 0 8 T090	1959111
FUWA (China)		
420x178	19636 1850 0 5 T013/T090	1963601
GFA		
300x60	15153 1600 0 8 T0127	1515301
300x80	15077 1600 0 8 T0127	1507701
300x100	17314 1600 0 8 T0127	1713401
Kässbohrer (Evobus)		
300x200	19568 1800 0 8 T013	1956801
400x200	19166 1946 0 5 T013	1916602

AXLE	Rear Axle	Art-Nr.
Knott		
410x220	19712 1550 0 5 T011	1971201
485	29626 258 0 4 T457	2962603
ROR		
D-Elsa-2	29131 302 1 4 T3016	2913105
SAF		
300x150	19517 1540 0 5 T0100	1951705
420x180	19283 2050 0 5 T0100	1928311
420x200	19477 2050 0 5 T0100	1947708
Warstein		
300x150	19596 1800 0 8 T013	1959601
300x200	19568 1800 0 8 T013	1956801
Valx		
360x200	19902 1800 0 8 T0124	1990218
420x180	19636 1850 0 5 T0124	1963603
ZF		
Knorr SB7000	29087 300 1 4 T7400	2908711
Knorr SB7000	29278 300 1 4 T7400	2927802

Brake Manufacturer / Производитель тормозов

AXLE	Rear Axle	Art-Nr.
BPW		
SB 3745	29306 300 1 4 T3030	2930601
SB 4345	29307 300 1 4 T3030	2930701
SB 4309	29308 300 1 4 T3030	2930801
TSB 3709	29227 300 1 4 8200	2922701
TSB 4309	29228 300 1 4 8200	2922801
Bosch		
ZOH 2x48	29217 206 1 5 T3038	2921702
Brembo		
PF 2.48	29192 209 1 4 T3036	2919202
PF 2.52	29200 209 2 4 T3036	2920002
Haldex		
DB 19	29181 300 1 4 T3032	2918101
Knorr-Bremse		
SB 5000 (MB) -12/2013	29148 340 2 5 T3016	2914812
SB 5000 (MB) 01/2014-	29183 340 2 5 T3016	2918302
SB 5000 (MAN) -06/2014	29148 340 2 5 T3029	2914811
SB 5000 (MAN) 07/2014-	29183 340 2 5 T3029	2918301
SB 5000 (Kamaz) -12/2013	29148 340 2 5 T3030	2914815
SB 5000 (Kamaz) 01/2014-	29183 340 2 5 T3030	2918303
SK 6000 (BPW)	29306 300 1 4 T3030	2930601
SB 6000 (Iveco)	29095 300 3 4 T3030	2909522
SB 6000 (Iveco)	29320 300 1 4 T3030	2932005



AXLE	Rear Axle	Art-Nr.
SB 6000 (MAN)	29095 300 3 4 T3010	2909507
SB 6000 (MAN)	29320 300 1 4 T3010	2932001
SB 6000 (MB)	29095 300 1 4 T3016	2909504
SB 6000 (MB)	29361 300 3 4 T3016	2936101
SB 6000 (MB)	29095 300 3 4 T7400	2909518
SB 6000 (MB)	29361 300 1 4 T7400	2936102
SN 7000 (BPW)	29307 300 1 4 T3030	2930701
SB 7000 (Evobus, MB, Solaris, Prevost)	29087 300 1 4 T7400	2908711
SB 7000 (Evobus, MB, Solaris, Prevost)	29278 300 1 4 T7400	2927802
SB 7000 (DAF) -10/2011	29202 300 1 4 T7400	2920201
SB 7000 (DAF) ProTec S 10/2011-	29278 300 1 4 T7400	2927802
SB 7000 (Scania)	29201 300 4 4 T3050	2920101
SB 7000 (Scania Bus)	29059 300 4 4 T7400	2905902
SB 7000 (Scania)	29278 300 1 4 T3050	2927801
SB 7000 (Scania Bus)	29278 300 1 4 T7400	2927802
SB 7000 (Scania)	29331 300 1 4 T3050	2933101
SB 7000 (Scania Bus)	29331 300 1 4 T7400	2933102
SK 7000 (BPW)	29308 300 1 4 T3030	2930801
Meritor		
C-Lisa (Renault Truck)	29100 252 0 4 T3016	2910004
D 3 (Renault Truck)	29030 282 1 4 T3016	2903007
D 3 (Kässbohrer)	29030 282 1 4 T7400	2903009
D-Elsa-1 (MAN)	29113 282 1 4 T3010	2911303
D-Elsa-1 (MAN)	29113 282 1 4 T3023	2911307
D-Elsa-2 (Irisbus)	29131 302 1 4 T3016	2913105
D-Elsa-2 (MAN)	29131 302 1 4 T3010	2913103
D-Elsa-2 (Renault Truck)	29131 302 1 4 T3016	2913105
D-Elsa-2 (ROR)	29131 302 1 4 T3016	2913105
D-Lisa (Renault Truck)	29090 282 1 4 T3016	2909006
B-Duco (Volvo)	29136 292 1 4 D 7500	2913606
C-Duco (Volvo)	29137 292 1 4 T3034	2913706
D-Duco (Volvo) -12/2012	29125 292 1 4 D 7500	2912503
D-Duco (Volvo) 01/2013-	29277 292 1 4 D 7500	2927701
DLE-Duco (Volvo)	29151 292 1 4 T3034	2915102
Elsa 225-1 (Renault Truck, Volvo)	29173 292 2 4 T3032	2917301
Elsa 225-1 (Renault Truck, Volvo); Heavy Duty Application/Schwerlastanwendung	29272 292 2 4 T7600	2927201
Elsa 225-3 (Renault Truck, Volvo, Ford)	29174 292 2 4 T3032	2917401
Elsa 225-3 (Renault Truck, Volvo); Heavy Duty Application/Schwerlastanwendung	29273 292 2 4 T7600	2927301

AXLE	Rear Axle	Art-Nr.
Elsa VGT 195 (RenaultTruck, Volvo) -12/2011	29177 292 2 4 T3032	2917701
Elsa VGT 195 (RenaultTruck, Volvo) -01/2012	29177 292 2 4 T7600	2917705
EX 225-H3 (MCI Bus, Optare Bus)	29187 310 1 4 T7400	2918701
EX225-434L MACK Truck (USA)	29291 300 1 4 T3032/T7070	2929101
Teves		
SS60	29581 150 0 4 T205	2958104
4S57	29764 203 0 5 T527	2976402
Wabco		
485	29626 258 0 4 T457	2962603
V 1000 (MAN)	29055 220 0 4 T3010	2905503
V 1300 (MB Unimog)	29134 230 1 4 T202	2913401
PAN 17 (DAF, MAN) -07/2014	29088 260 3 4 T3010	2908807
PAN 17 (DAF, MAN) 08/2014-	29285 260 3 4 T3010	2928502
PAN 17 (Optare) -07/2014	29088 260 3 4 T7400	2908824
PAN 17 (Optare) 08/2014-	29285 260 3 4 T7400	2928504
PAN 17 (Renault Truck) -07/2014	29088 260 3 4 T3016	2908823
PAN 17 (Renault Truck) 08/2014-	29285 260 3 4 T3016	2928503
PAN 17 (Renault Truck) -07/2014	29088 260 3 4 T3032	2908820
PAN 17 (Renault Truck) 08/2014-	29285 260 3 4 T3032	2928501
PAN 17 (MAN)	29091 270 3 4 T3010 (Oversize/Übermaß 29088)	2909104
PAN 17 (South America/Süd Amerika)	29117 260 0 4 T3010	2911701
PAN 19-1 (DAF) -08/2014	29159 298 2 4 T3010	2915901
PAN 19-1 (DAF) 09/2014-	29313 298 2 4 T3010	2931301
PAN 19-1 (Dennis) -08/2014	29159 298 2 4 T7400	2915907
PAN 19-1 (Dennis) 09/2014-	29313 298 2 4 T7400	2931303
PAN 19-2 (DAF)	29141 298 1 4 T3010	2914106
PAN 19-2 (Renault Truck)	29142 298 1 4 T3016	2914204
MAXX 19 (Volvo, Renault Truck)	29284 300 1 4 T3032	2928401





TEXTAR®
BRAKE TECHNOLOGY

PERFORMANCE AND SAFETY ASSURED .

Choosing the right friction solution needn't be a challenge. Be it for truck, trailer, bus or coach, Textar offers disc brake pads and drum brake linings for 100% of all European commercial vehicles. And with Textar, every product comes with the assurance of total quality, maximum safety and ultimate reliability.



As the world's leading brand for commercial vehicle brake friction and the leading supplier of brake pads and linings to both the O.E. sector and the aftermarket, Textar offers the performance and safety that only the original can guarantee. That's why 70% of all commercial vehicles in Europe are fitted with Textar brake linings as standard. Driving innovation: Textar's new lightweight disc brake pads combine safety with sustainability. Their ultra-strong, yet lightweight design contributes to lowering fuel consumption and emissions, so they're better for you and for the environment too.

ПРОИЗВОДИТЕЛЬНОСТЬ И БЕЗОПАСНОСТЬ ГАРАНТИРУЕМ.

Выбор правильных фрикционных материалов и лучших технологий не должен быть для Вас проблемой. Не важно, для каких видов автомобилей - грузовиков, прицепов, городских или магистральных автобусов - у Textar Вы найдёте решения по тормозным системам почти для всех коммерческих автомобилей Европы. На правах мирового лидера в области производства тормозных колодок для коммерческого транспорта и ведущего поставщика колодок для дисковых и барабанных тормозов, как для О.Е. (оригинальной комплектации автомобилей), так и для рынка запчастей, мы предлагаем потребителю тот уровень надёжности, который в состоянии гарантировать только поставщик на конвейер. Поэтому 70% всех коммерческих автомобилей Европы уже с завода оснащены накладками барабанного тормоза TEXTAR.

Мы действуем с максимальной отдачей: так, Textar стал первым поставлять на рынок автозапчастей колодки для дискового тормоза облегчённого типа, которые не только исключительно надёжны и комфортабельны, но и эффективны и экологичны.

Представительство ТМД Фрикшн Сервисес ГмбХ
Ул. Крутицкий Вал, 3 корп.2, офис 5
109044 Москва, Россия
Тел.: +7 (495) 988-43-06
Факс: +7 (495) 988-43-07
www.tmdfriction.com

TMD FRICTION
A NISSHINBO GROUP COMPANY