

# T0143

**PREMIUM 23K, 26K  
& 29K LBS. GAWR**



## FOR TRANSIT & COACH APPLICATIONS

- T0143 provides excellent performance for all **transit & coach** applications from 23K axle rating up to 29K axle rating.
- Minimum noise formula.
- Meets the FMVSS-121 standards at 23K, 26K & 29K lbs. with a 195 AL Factor.
- Good thermal stability and drum compatibility.
- Good drum & friction wear per TMD O.E. Wear & Temperature test procedure (TMD O.E. W/T Test).
- **O.E. and Transit authority approved.**

### FMVSS-121 CONDITIONS:

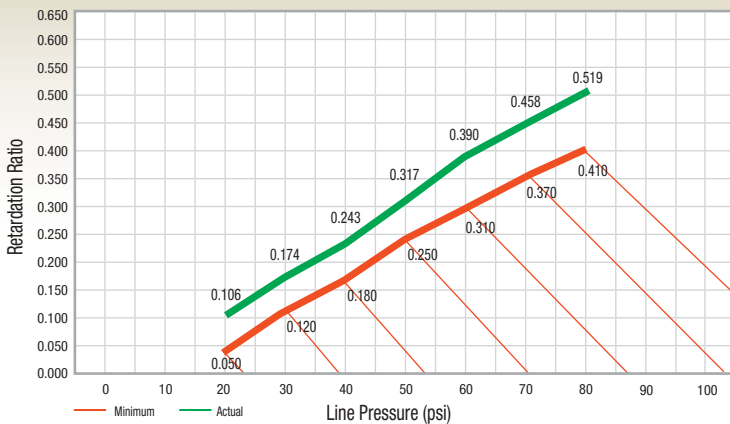
Axle Rating: 29,000 lbs. | Brake Size: 4728 16.5x8.62  
AL Factor: 195 | Rolling Radius: 18.3 inch

### WEAR CONDITIONS:

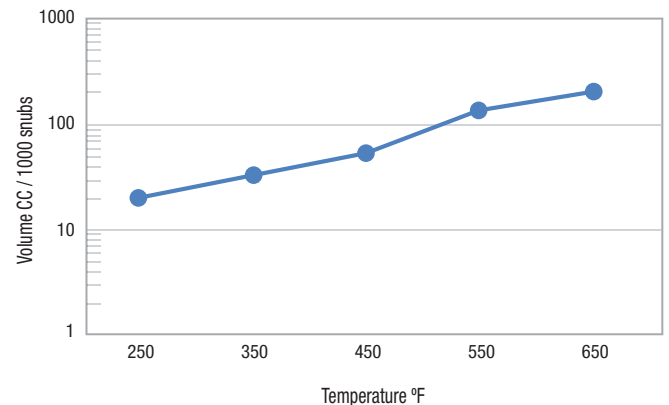
Axle Rating: 23,000 lbs. | Brake Size: 4707 16.5x7  
AL Factor: 165 | Rolling Radius: 19.7 inch



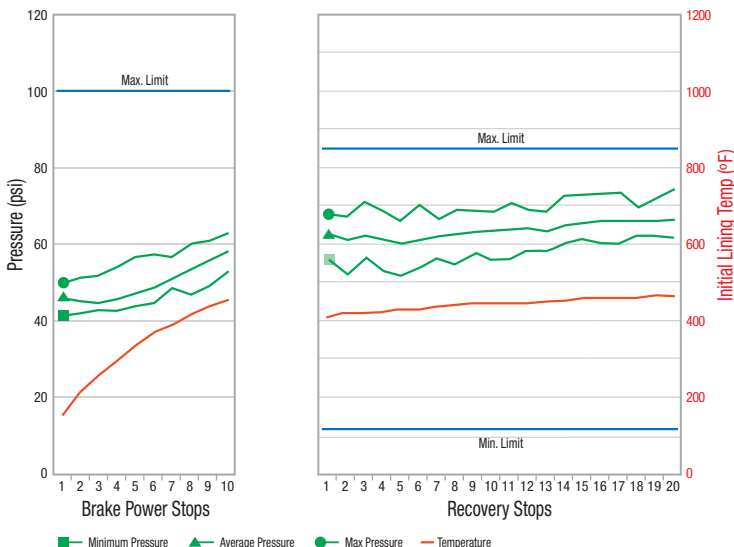
### RETARDATION



### TMD O.E. W/T TEST



### BRAKE POWER & RECOVERY



### FRICITION PROPERTIES

Gogan hardness	30
Specific gravity	2.1 gr/cm <sup>3</sup>
Transverse Rupture Strength	8,500 psi min.

### SAE J661A

Normal friction CoF	0.436 F
Hot friction CoF	0.411 F

### O.E. AND O.E.S. PROGRAM APPROVED



# T0143



## Performance similar to

**26K:** Abex 697 • Haldex TransitMax • Stemco Duroline Ultra Peak BRT • Frasle AF557 • Marathon MBST

**29K:** Abex MQ • Haldex TransitMax • Stemco Duroline Ultra Peak FT • Frasle AF787 • Marathon KVT Transit

	<i>Recommended</i>	<i>Optional</i>	<i>Not recommended</i>
SINGLE TRACTOR / TRAILER		●	
TANDEM TRACTOR TRAILER		●	
MULTIPLE TRAILER		●	
VAN TRAILER		●	
STRAIGHT TRUCK		●	
FLAT BED TRAILER		●	
DRY BULK		●	
LOGGING TRAILER		●	
CAR HAULER		●	
LIVESTOCK TRAILER		●	
TANKER		●	
CONTAINER CHASSIS		●	
SCHOOL BUS	●		
FIRE ENGINE		●	
REFUSE TRUCK		●	
TANDEM AXLE MIXER		●	
SINGLE AXLE DUMP		●	
TANDEM AXLE DUMP		●	
TRANSIT	●		
COACH	●		

For further information contact:

## TMD FRICTION

A NISSHINBO GROUP COMPANY

*\*This application guide is described as general reference. The correct material for your application should be reviewed with a brake friction professional.*