

T0135

SEVERE DUTY PREMIUM O.E.
26,000 LBS. GAWR



FOR TRUCK, TRACTOR & TRAILER APPLICATIONS

- T0135 provides exceptional wear characteristics and stopping power for all severe duty applications, including vocational vehicles.
- Excellent option for improved drum brake wear and elimination of excessive noise issues.
- Exceeds the FMVSS-121 standards at 26K axle rating with a 180 AL Factor.
- Excellent performance in all environmental and driving conditions.
- Good drum & friction wear per TMD O.E. Wear & Temperature test procedure (TMD O.E. W/T Test).

FMVSS-121 CONDITIONS:

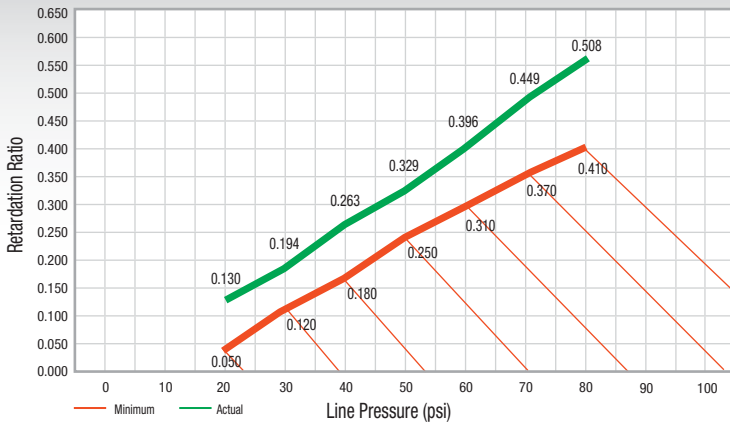
Axle Rating: 25,000 lbs. | Brake Size: 4707 16.5x7
 AL Factor: 180 | Rolling Radius: 20.8 inch

WEAR CONDITIONS:

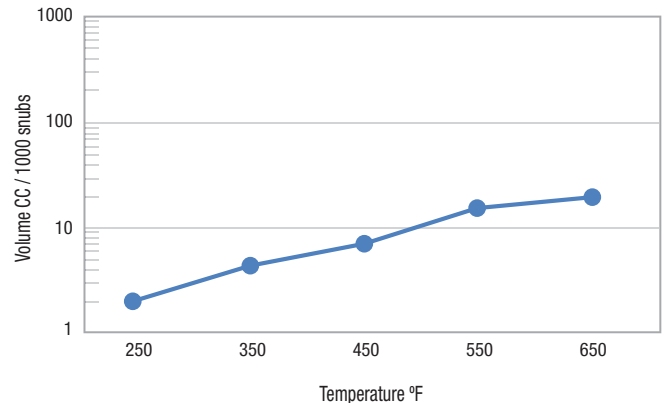
Axle Rating: 25,000 lbs. | Brake Size: 4707 16.5x7
 AL Factor: 165 | Rolling Radius: 19.7 inch



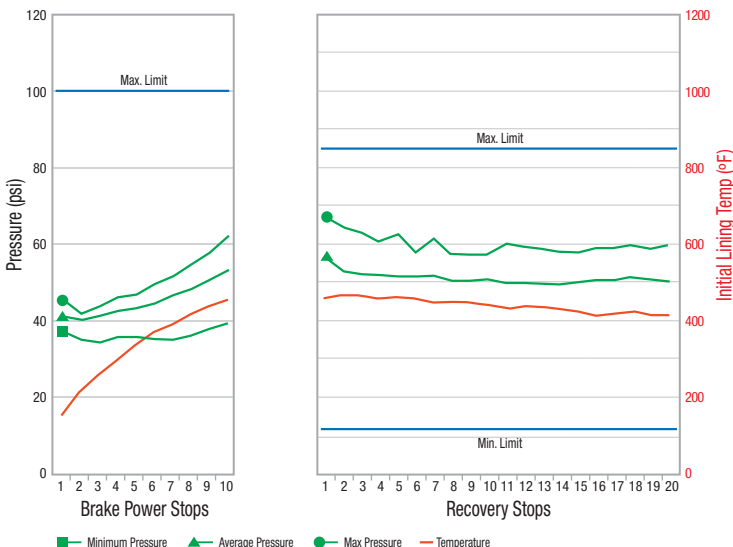
RETARDATION



TMD O.E. W/T TEST



BRAKE POWER & RECOVERY



FRICITION PROPERTIES

Gogan hardness	35
Specific gravity	1.95 gr/cm ³
Transverse Rupture Strength	6,750 psi min.

SAE J661A

Normal friction CoF	0.496 G
Hot friction CoF	0.487 G

O.E. AND O.E.S. PROGRAM APPROVED



T0135



Performance similar to
Abex 6028 / 6040 • Meritor R403

	<i>Recommended</i>	<i>Optional</i>	<i>Not recommended</i>
SINGLE TRACTOR / TRAILER		●	
TANDEM TRACTOR TRAILER		●	
MULTIPLE TRAILER	●		
VAN TRAILER		●	
STRAIGHT TRUCK		●	
FLAT BED TRAILER		●	
DRY BULK		●	
LOGGING TRAILER	●		
CAR HAULER		●	
LIVESTOCK TRAILER		●	
TANKER	●		
CONTAINER CHASSIS		●	
SCHOOL BUS		●	
FIRE ENGINE	●		
REFUSE TRUCK	●		
TANDEM AXLE MIXER	●		
SINGLE AXLE DUMP	●		
TANDEM AXLE DUMP	●		
TRANSIT		●	
COACH		●	

For further information contact:

TMD FRICTION

A NISSHINBO GROUP COMPANY

**This application guide is described as general reference.
The correct material for your application should be reviewed
with a brake friction professional.*